

Baybreeze 22

4  | 2  | 2 

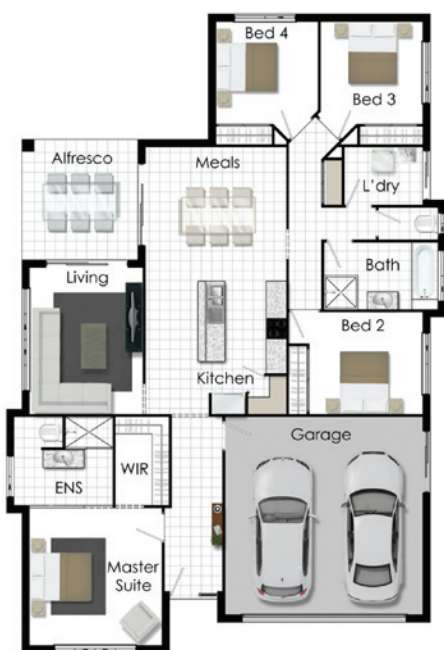
House & land package from \$424,313*

\$424,313* on lot 91 (600sqm)



Image for illustrative purposes only.

HOUSE LAND DRIVEWAY FENCING LANDSCAPING JUST MOVE IN!



- Master with ensuite & WIR
- Open plan living
- Alfresco Patio
- Separate Living Room

INCLUDES

- Face brick external walls
- 2.440m ceilings
- Ceiling insulation
- Gas hot water
- Tiled roof
- Panel Lift double garage doors (manual)
- 600mm Upright Electric Cooker
- Built-ins to bedrooms
- Built-ins to linen cupboard
- Tiles to living areas and wet areas
- Carpet to bedrooms & living
- Fully airconditioned
- Exhaust fans

Living Areas	150.75 sqm
Outdoor Patio	12.0 sqm
Porch	2.54 sqm
Garage	36.39 sqm
TOTAL AREA	201.68 sqm

- Fly screens to windows and doors
- TV Antenna
- Rendered letterbox
- Clothesline, extendaline
- Exposed aggregate driveway
- Fencing to RHS boundary only by builder
- Landscaping allowance
- Turf

Package Valid to 29/02/12



SALES AND INFO (07) 3396 0666
www.langdonchase.com.au

LANGDON  **CHASE**

urbex
designed for life.

House and land packages are priced with standard inclusions. Limited time only. Home and land sold separately. Urbex is responsible for the sale of the land only. Purchasers will need to enter into a separate contract with the relevant builder for the construction of homes. Photographs and illustrations are intended to be a visual aid only and do not necessarily depict the actual development or homes. Urbex gives no warranty and makes no representation as to the accuracy or sufficiency of any description, photography, illustration or statement contained in this brochure and accepts no liability for any loss which may be suffered by any person who relies either wholly or in part upon the information presented. All information provided is subject to change without notice. Please refer to the most recent home specifications and working drawings within your contract of sale.