

**SURVEYOR'S CERTIFICATION**

I, Shane Geoffrey Long  
 being a Consulting Surveyor and duly authorised representative of: -  
 BMD CONSTRUCTIONS Pty. Ltd.  
 hereby:-  
 certify the information contained in this drawing is an accurate "as constructed" representation of the works;  
 accept responsibility for the "as constructed" information contained in this drawing; and  
 acknowledge the "as constructed" information contained in the drawing may be relied on by the Redland Shire Council and others.  
 Certification for Stage 3 by *Shane Geoffrey Long* on 09-11-2009  
 For: S. G. Long and Associates (S2292)

**WORKS AS CONSTRUCTED**

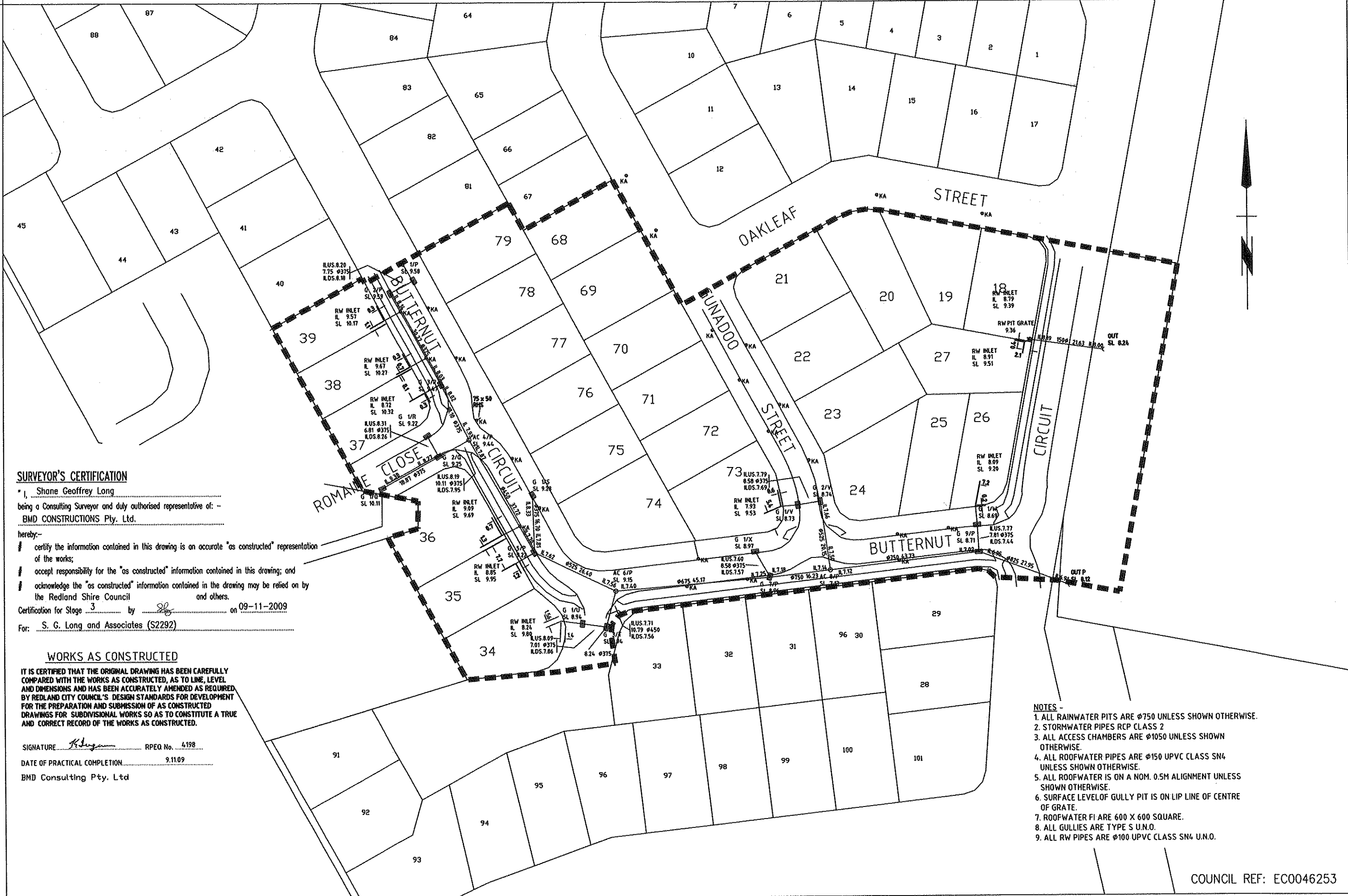
IT IS CERTIFIED THAT THE ORIGINAL DRAWING HAS BEEN CAREFULLY COMPARED WITH THE WORKS AS CONSTRUCTED, AS TO LINE, LEVEL AND DIMENSIONS AND HAS BEEN ACCURATELY AMENDED AS REQUIRED BY REDLAND CITY COUNCIL'S DESIGN STANDARDS FOR DEVELOPMENT FOR THE PREPARATION AND SUBMISSION OF AS CONSTRUCTED DRAWINGS FOR SUBDIVISIONAL WORKS SO AS TO CONSTITUTE A TRUE AND CORRECT RECORD OF THE WORKS AS CONSTRUCTED.

SIGNATURE *Shane Geoffrey Long* RPEQ No. 4198  
 DATE OF PRACTICAL COMPLETION 9.11.09  
 BMD Consulting Pty. Ltd

**SEWER:**  
 ALL SEWER PIPES ARE 150Ø uPVC CLASS 'SH' U.N.O.  
 ALL SEWERAGE MAINTENANCE HOLES ARE Ø1050 UNLESS SHOWN OTHERWISE.  
 ALL KC BRANCHES ARE Ø100 uPVC CLASS 'SH' U.N.O.

COUNCIL REF: EC0046253

<b>SUNSTATE ENGINEERING SURVEYS</b> A.B.N. 33 011 008 521 Unit 2/44 Storie Street, CLONTARF, Q. 4019 Phone: (07) 3283 7611 Fax: (07) 3283 7633 Mobile: 0411 171 322 Email: sunsurv@bigpond.net.au		SURVEYED B.H. 10.09 DRAWN B.W. 11.09 CHECKED	No. 1 OF 1 SHEETS OPM 93236 RL 12.561	<b>BMD CONSTRUCTIONS Pty.Ltd.</b> 363 MONTAGUE RD. WEST END, QLD. 4101. Ph: (07) 3033 9400 Fax: (07) 3846 5105	<b>AS CONSTRUCTED SEWERAGE</b> SOVEREIGN HEIGHTS ESTATE 6 STAGE 3 KING ST. THORNLANDS	DRAWING No. CB-0624-ACS SCALE: 1: 500	REV. B
B	1109	AS CONSTRUCTED					
A	1109	PRELIMINARY ISSUE					



**SURVEYOR'S CERTIFICATION**

I, Shane Geoffrey Long  
 being a Consulting Surveyor and duly authorised representative of: -  
BMD CONSTRUCTIONS Pty. Ltd.

hereby:-  
 certify the information contained in this drawing is an accurate "as constructed" representation of the works;  
 accept responsibility for the "as constructed" information contained in this drawing; and  
 acknowledge the "as constructed" information contained in the drawing may be relied on by the Redland Shire Council and others.  
 Certification for Stage 3 by SL on 09-11-2009  
 For: S. G. Long and Associates (S2292)

**WORKS AS CONSTRUCTED**

IT IS CERTIFIED THAT THE ORIGINAL DRAWING HAS BEEN CAREFULLY COMPARED WITH THE WORKS AS CONSTRUCTED, AS TO LINE, LEVEL AND DIMENSIONS AND HAS BEEN ACCURATELY AMENDED AS REQUIRED BY REDLAND CITY COUNCIL'S DESIGN STANDARDS FOR DEVELOPMENT FOR THE PREPARATION AND SUBMISSION OF AS CONSTRUCTED DRAWINGS FOR SUBDIVISIONAL WORKS SO AS TO CONSTITUTE A TRUE AND CORRECT RECORD OF THE WORKS AS CONSTRUCTED.

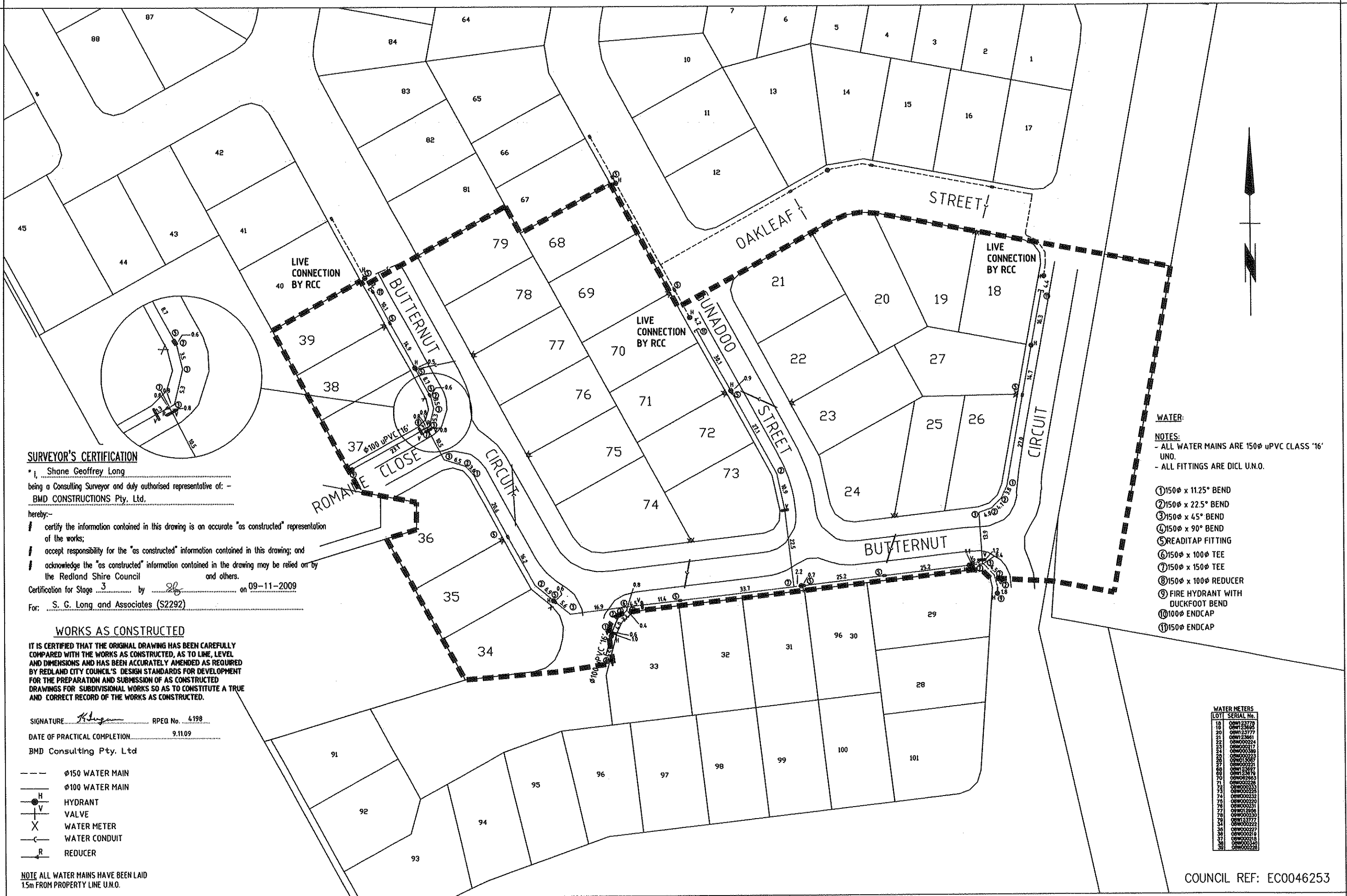
SIGNATURE [Signature] RPEQ No. 4198  
 DATE OF PRACTICAL COMPLETION 9.11.09  
 BMD Consulting Pty. Ltd

**NOTES -**

1. ALL RAINWATER PITS ARE Ø750 UNLESS SHOWN OTHERWISE.
2. STORMWATER PIPES RCP CLASS 2
3. ALL ACCESS CHAMBERS ARE Ø1050 UNLESS SHOWN OTHERWISE.
4. ALL ROOFWATER PIPES ARE Ø150 UPVC CLASS SN4 UNLESS SHOWN OTHERWISE.
5. ALL ROOFWATER IS ON A NOM. 0.5M ALIGNMENT UNLESS SHOWN OTHERWISE.
6. SURFACE LEVEL OF GULLY PIT IS ON LIP LINE OF CENTRE OF GRATE.
7. ROOFWATER FI ARE 600 X 600 SQUARE.
8. ALL GULLIES ARE TYPE S U.N.O.
9. ALL RW PIPES ARE Ø100 UPVC CLASS SN4 U.N.O.

COUNCIL REF: EC0046253

<b>SUNSTATE ENGINEERING SURVEYS</b> A.B.N. 33 011 008 521 Unit 2/44 Storie Street, CLONTARF, Q. 4019 Phone: (07) 3283 7611 Fax: (07) 3283 7633 Mobile: 0411 171 322 Email: sunsurv@bigpond.net.au		SURVEYED B.H. 10.09 DRAWN B.W. 11.09 CHECKED	No. 1 OF 1 SHEETS OPM 93236 RL 12.561	<b>BMD CONSTRUCTIONS Pty.Ltd.</b> 363 MONTAGUE RD. WEST END, QLD. 4101. Ph: (07) 3033 9400 Fax: (07) 3846 5105	<b>AS CONSTRUCTED STORMWATER SOVEREIGN HEIGHTS ESTATE 6 STAGE 3</b> KING ST. THORNLANDS	DRAWING No. CB-0624-ACSW SCALE: 1: 500	REV. A
---	--	--	--	--	--	---	--------



**SURVEYOR'S CERTIFICATION**

I, Shane Geoffrey Long  
 being a Consulting Surveyor and duly authorised representative of: -  
BMD CONSTRUCTIONS Pty. Ltd.

hereby:-  
 / certify the information contained in this drawing is an accurate "as constructed" representation of the works;  
 / accept responsibility for the "as constructed" information contained in this drawing; and  
 / acknowledge the "as constructed" information contained in the drawing may be relied on by the Redland Shire Council and others.  
 Certification for Stage 3 by SL on 09-11-2009  
 For: S. G. Long and Associates (S2292)

**WORKS AS CONSTRUCTED**

IT IS CERTIFIED THAT THE ORIGINAL DRAWING HAS BEEN CAREFULLY COMPARED WITH THE WORKS AS CONSTRUCTED, AS TO LINE, LEVEL AND DIMENSIONS AND HAS BEEN ACCURATELY AMENDED AS REQUIRED BY REDLAND CITY COUNCIL'S DESIGN STANDARDS FOR DEVELOPMENT FOR THE PREPARATION AND SUBMISSION OF AS CONSTRUCTED DRAWINGS FOR SUBDIVISIONAL WORKS SO AS TO CONSTITUTE A TRUE AND CORRECT RECORD OF THE WORKS AS CONSTRUCTED.

SIGNATURE [Signature] RPEQ No. 4198  
 DATE OF PRACTICAL COMPLETION 9.11.09  
 BMD Consulting Pty. Ltd

- $\phi$ 150 WATER MAIN
- $\phi$ 100 WATER MAIN
- H HYDRANT
- V VALVE
- X WATER METER
- C- WATER CONDUIT
- R- REDUCER

NOTE ALL WATER MAINS HAVE BEEN LAID 1.5m FROM PROPERTY LINE U.N.O.

**WATER:**

**NOTES:**

- ALL WATER MAINS ARE 150 $\phi$  uPVC CLASS '16' UNO.
- ALL FITTINGS ARE DICL U.N.O.

- ① 150 $\phi$  x 11.25° BEND
- ② 150 $\phi$  x 22.5° BEND
- ③ 150 $\phi$  x 45° BEND
- ④ 150 $\phi$  x 90° BEND
- ⑤ READITAP FITTING
- ⑥ 150 $\phi$  x 100 $\phi$  TEE
- ⑦ 150 $\phi$  x 150 $\phi$  TEE
- ⑧ 150 $\phi$  x 100 $\phi$  REDUCER
- ⑨ FIRE HYDRANT WITH DUCKFOOT BEND
- ⑩ 100 $\phi$  ENDCAP
- ⑪ 150 $\phi$  ENDCAP

**WATER METERS**

LOT	SERIAL No.
18	00W123770
19	00W123465
20	00W123777
21	00W123861
22	00W000224
23	00W000217
24	00W000389
25	00W000223
26	00W000227
27	00W000228
28	00W000229
29	00W000230
30	00W000231
31	00W000232
32	00W000233
33	00W000234
34	00W000235
35	00W000236
36	00W000237
37	00W000238
38	00W000239
39	00W000240
40	00W000241
41	00W000242
42	00W000243
43	00W000244
44	00W000245
45	00W000246
46	00W000247
47	00W000248
48	00W000249
49	00W000250
50	00W000251
51	00W000252
52	00W000253
53	00W000254
54	00W000255
55	00W000256
56	00W000257
57	00W000258
58	00W000259
59	00W000260

COUNCIL REF: EC0046253

<b>SUNSTATE ENGINEERING SURVEYS</b> A.B.N. 33 011 008 521 Unit 2/44 Storie Street, CLONTARF, Q. 4019 Phone: (07) 3283 7611 Fax: (07) 3283 7633 Mobile: 0411 171 322 Email: sunsurv@bigpond.net.au		SURVEYED B.H. 10.09 DRAWN B.W. 11.09 CHECKED	No. 1 OF 1 SHEETS OPM 93236 RL 12.561	<b>BMD CONSTRUCTIONS Pty.Ltd.</b> 363 MONTAGUE RD. WEST END, QLD. 4101. Ph: (07) 3033 9400 Fax: (07) 3846 5105	<b>AS CONSTRUCTED WATER SOVEREIGN HEIGHTS ESTATE 6 STAGE 3</b> KING ST. THORNLANDS	DRAWING No. CB-0624-ACW SCALE: 1: 500	REV. B
B	11.09	AS CONSTRUCTED					
A	11.09	PRELIMINARY ISSUE					

